

A photograph of a fishing vessel's deck. A large black net is suspended, with several yellow floats attached to it. In the background, a person is visible on the deck, and the sky is blue with some clouds. The image is partially obscured by a dark blue overlay on the left side.

Contribute to ISSF Initiatives for Sustainable Fisheries

*Sponsorship Opportunities for Fleets,
Seafood Companies, & Retailers*

Invest in a Better Future for Tuna Fisheries

Introducing sponsorship
opportunities for seafood
retailers, vessels, and
companies



NOMAD

Invest in a Better Future for Tuna Fisheries

SUPPORT VITAL SUSTAINABILITY WORK



Demonstrate sector leadership

Contribute to independent ISSF research and compliance initiatives to demonstrate your commitment to sustainable seafood.



Customize your sponsorship

Choose a contribution level and select from a range of ISSF projects that are meaningful for your organization to support.



Enhance visibility

Gain recognition for your organization's support of ISSF's activities to ensure sustainable tuna.

Your organization can voluntarily contribute support for ISSF's sustainability work in tuna fisheries around the world.

Support the Work of a Sustainability Leader



ISSF Mission

To undertake and facilitate science-based initiatives to continuously improve the sustainability of global tuna fisheries and the health of the ecosystems that support them.

ISSF Objective

To continuously improve the sustainability of global tuna fisheries and the ecosystems that support them to result in those fisheries meeting and maintaining the Marine Stewardship Council (MSC) certification standard.



Support the Work of a Sustainability Leader

ISSF OVERVIEW



Global, science-driven non-profit founded in 2009

- Only NGO focused primarily on tuna sustainability
- Scientific research program and policy advocacy outreach



Offers resources & tools

For vessels, retailers and food-service companies, seafood companies, RFMOs, scientists and scientific agencies, environmental NGOs, tuna fisheries seeking MSC certification, and tuna fishery improvement projects

The majority of ISSF's expenses are directly tied to science, influence, and verification work.



Support the Work of a Sustainability Leader

ISSF OVERVIEW



Diverse stakeholders & partners

- Participating seafood companies committed to conservation measures
- Vessels on PVR & VOSI that have committed to best practices
- Retailers that incorporate ISSF guidelines in seafood sourcing



Select from a Range of Sponsorship Opportunities



**Impact on the Water
Research**



**Verification Tools for
the Seafood Industry**



**Consultations by
ISSF Experts**



Impact on the Water Research

SUPPORT BEST PRACTICES

Your organization can help to fund ISSF's impact on the water research to **identify best practices in sustainable fishing** — including in FAD management, bycatch reduction, and biodegradable gear.





Impact on the Water Research

SUPPORT BEST PRACTICES

ISSF Initiatives You Can Support

- Scientific research cruises and pilot projects
- Research publications

What Your Contributions Can Fund

- Staff time and costs associated with travel, materials, shipping, data analysis and reporting for research
- Data transmission and review costs
- Materials needed for research, such as biodegradable fishing gear and echosounder buoy/transmission costs
- Open access for science papers online to make research more visible



Verification Tools for the Seafood Industry



SUPPORT TRANSPARENCY & COMPLIANCE

ISSF Initiatives You Can Support

- PVR vessel list auditing
- VOSI vessel list auditing

What Your Contributions Can Fund

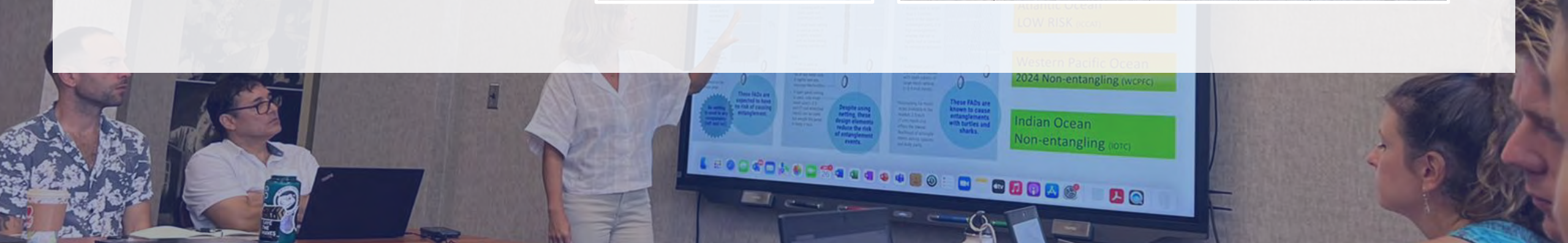
- Annual third-party audits of vessels listed on PVR
- Annual third-party audits of vessels listed on VOSI



Consultations by ISSF Experts

INFLUENCE STAKEHOLDERS

Your organization also could underwrite **consultations by ISSF experts** for FIP participants as well as workshops and resources for fishers.





Consultations by ISSF Experts

INFLUENCE STAKEHOLDERS

ISSF Initiatives You Can Support

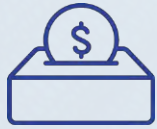
- FIP coordinator engagement and technical support
- Skippers workshops, including on bycatch mitigation best practices
- Train the trainer workshops
- Training materials and guidebooks for fishers

What Your Contributions Can Fund

- Staff time and costs associated with preparation, travel, materials, data analysis, and/or reporting for meetings and workshops
- Translations of ISSF materials into multiple languages



Select from a Range of Sponsorship Opportunities



Various contribution levels are available.

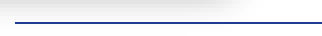
For example, a \$1,000* pledge can cover the cost of biodegradable materials for two FADs

- \$5,000 pledge - translating one ISSF guidebook for fishers into another language
- \$20,000 pledge – electronic monitoring system (EMS) hardware and installation
- \$40,000 pledge - scientist-fishers workshop series

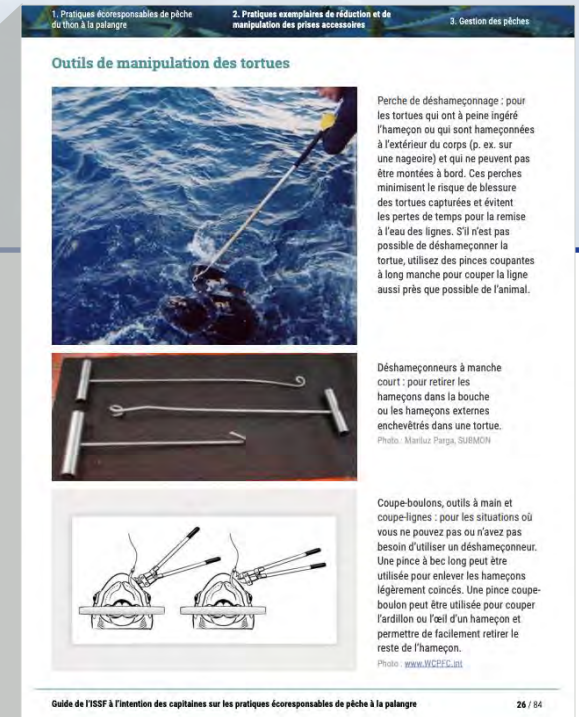
**All costs are approximate; ISSF is a 501(c)(3) tax exempt organization under the laws of the United States, and contributions may be tax deductible depending on the laws of your jurisdiction.*



Chinese traditional



French



Receive Recognition for Your Contributions



ISSF will recognize fleets, seafood companies, and retailers for their generous funding contributions.

Recognitions can be customized for each contributing organization.

Recognitions may include:

- Acknowledgement on ISSF website
- Acknowledgement at events
- Name and logo on related ISSF materials (flyers, public reports, etc.)
- Opportunity to speak at events

Take Next Steps to Support ISSF's Vital Work



Ready to explore sponsorship possibilities?

Contact Lynne Mandel, ISSF
lmandel@iss-foundation.org

Thank you for considering becoming a sponsor!

Learn more about ISSF
iss-foundation.org